



ST. MARY OF THE WOODS CATHOLIC CHURCH



Building the future.



Building the future.



Campaign Prayer for a New School

Heavenly Father,
We trust in your presence and believe that You
behold what we are about.

Through Your Goodness, you have blessed our
parish for over 175 years. Generations of our
families, gone before us, were men and women
of great faith and they sacrificed much to provide
what we enjoy today.

Now, we are being called upon to take another leap
of faith. In faith, we come to You once again and
ask Your blessing as we begin our capital campaign
to build a new school for St. Mary and Trinity.

Send Your Holy Spirit upon us that we might open
our hearts to share the blessings and resources
that You have graciously given us so that we might
continue to do Your work here in this place and
preserve our parish and Catholic schools for years
to come.

We invoke the intercession of our patroness, St.
Mary, to guide us in this special moment of our
parish's history as we desire to continue educating
in the ways of faith through Christ Our Lord.
Amen.



Dear Parishioners,

When I arrived nearly seven years ago, in 2016, I would have never imagined, at that point, that we would be considering the possibility of a new school. We were in the thick of constructing the new Horn Community Center while, at the same time, faced with some of the smallest enrollment in the history of both St. Mary of the Woods School and Trinity High School. Seven years later, however, we have consistently experienced steady growth in enrollment to the point of now being filled to capacity with a waiting list. What a blessing!

Faced with aging school buildings, escalating maintenance costs for both facilities, growth in enrollment, and a lack of space to keep up with the current demands, we are faced with the reality of needing to respond.

In February, of this current year, our parish conducted a feasibility study to determine whether we had the support to build a new school. The conclusion of that comprehensive study revealed overwhelming support. Parishioners clearly communicated they believed building a new school was our best alternative going forward. With the findings of the feasibility study, the diocese gave our parish the green light to proceed with a capital campaign.

So, here we are in the year of our Lord, 2022! It is with great joy and hope that I share with you the beginning of our capital campaign, Together We Can! Together as a parish family, each of us has an important role to play in the present moment and the future. The great faith and energy of St. Mary of the Woods parish is on display every day in our amazing ministries, hours of Eucharistic adoration, and tremendous Catholic Schools. This great faith and energy will serve us well as we move forward with a capital campaign to build a new school which will be home to both St. Mary of the Woods School and Trinity High School.

Our present school buildings were built in the 50's and 60's. While they have served us well, it's time to invest in the future of our parish and Catholic schools. Further, in 2029, we will celebrate the 150th anniversary of Catholic school education on the campus of St. Mary of the Woods Church. Let's prepare for a brighter future by taking bold steps of faith today. Let's build on the hopes, dreams, and sacrifices of generations gone before us.

As you familiarize yourself with this brochure, I ask that you prayerfully consider how your sacrifice and generosity can make a difference in the Together We Can! Campaign. With God, all things are possible!
Together We Can!

Fr. Brian J. Roby
Pastor



Dear family and friends,

I am writing this letter to initiate our campaign to build a new school building for the students of St. Mary of the Woods School and Trinity High School. This process, while exciting, is also full of uncertainty. Over the last year, I have listened to many people explain how this fundraising and building process will go and why it should—or should not—happen. Some feel a new school is necessary, while others point out every reason why our students should continue to make due in our current buildings. Many people have asked me questions and voiced concerns about how we will do everything required for a new school, and my answer is one simple word: God. I truly believe that if God wants the new school built to house all of the students wanting a Catholic education in East Daviess County, then it will happen! However, we must be willing to do our part.

For 22 years, I have dedicated my life to educating students. Aside from roles as a wife and mother, working in education has been my greatest job! Every decision I make is for the best interest of the students of St. Mary of the Woods School and Trinity High School. Throughout the 150 years of Catholic education in Whitesville, countless people have stepped up to make sure that our kids received everything they needed. In fact, I think about this all the time. My role as principal is just one small part of a much larger mission, which is forming Disciples for Christ. The priests and nuns from years ago began Catholic education in our area, and I am so thankful they believed education was something necessary to offer our community. Someone built a schoolhouse near the current location of the St. Mary of the Woods cemetery, and that is how Catholic education first started in the Whitesville area. Then, the O'Sullivan building was built, which eventually led to the creation of the current buildings that exist today. Next, in the 1970s, a group of people decided our students needed their own gym instead of using other facilities, and that is how we came to know (and love!) "The Barn." This building served its role well for over 40 years, until five years ago, when we built the St. Mary of the Woods Horn Community Center. This new building has been a blessing to both our students and community, and I am so thankful our generous donors stepped up to provide our church and school with one of the nicest facilities in our region! Now, let's not forget that many believed that all of these things were once considered impossible or unnecessary tasks as well, but the people of our community came together and made them all a reality. While the current school buildings have served our students well since the 1950s, they are aged and, currently, we are running out of room to continue to educate every student who wants a Catholic education from the communities of Knottsville, Whitesville and the surrounding counties. As a matter of fact, St. Mary of the Woods and Trinity High School are providing a Catholic education to students who currently reside in Hancock County, Ohio County and Breckinridge County, as well as many from East Daviess County.

People ask me these two questions all the time: "Emily, how do you do everything you do, and why do you do this job?" Seven years ago, I was in adoration and could feel God pulling me to do something different. I was not unhappy teaching and coaching at Owensboro High School; in fact, I loved it there! However, I could feel God calling me to come back home to serve as the principal of St. Mary of the Woods School. Truthfully, I was uncertain about whether I should do it or not. I was comfortable at Owensboro, teaching six Biology classes, which was the best schedule I could ask for. After prayerful consideration, however, I answered God with a "yes." I am so thankful to continue to do what He asks of me today, and I will continue answering God's call for as long as he asks me to serve our students and community. Now, why do I bring this up? After all, God is constantly calling all of us to do His work. Rather, I bring this up to point out that I believe God is once again calling our community to come together. I do not feel that building a new school is an impossible task. I know that if we all come together to support this project, we can continue to effectively educate young people in the Catholic faith. In my opinion, a Catholic education is as necessary today as it was 150 years ago, perhaps even more so!

I'll end this letter with two very specific situations that have enlightened my path as an administrator and helped me realize God's plans for our community. In 2017, we had a visit from some sisters who reside in Spain. The day of their visit was a particularly difficult day for me, and one of the sisters asked me how I was doing. I was honest with her, telling her about the pressures I felt to make sure I was doing everything that I could to serve the teachers and students of both schools well. She told me, "The Holy Spirit will guide you. You just have to listen to what He is asking of you." I felt such a relief after she told me that! Since that moment, I strive to give all of my struggles to God, and knowing that I have God's constant support allows me to better trust my own decision-making to ensure that I am doing what is best for the teachers and students of SMWS and THS. Therefore, I am giving this campaign to God as well. I truly believe that, if we answer God's call to give our time, talents, and treasure, we can build a new school to continue to educate the students in our community. And, for anyone unable to provide his or her time, talents, and treasure, we certainly appreciate any prayers for the success of this campaign!

The second situation happened at an educator's conference I recently attended in Orlando. The speaker who kicked off the conference, Gian Paul Gonzalez, famously spoke to the NFL's New York Giants before their Superbowl victory in 2011 about being "All In" in every aspect of life. He stated that he wasn't just referring to football either, as he encouraged these athletes to be "all in" in their faith, friendships, and as fathers and husbands. Once again, I felt that God was speaking directly to me! I am "all in" on this campaign, as are all of the educators who work with our students. I believe in the mission of SMWS and THS with my whole heart and soul, and I know that it will take all of us to help create a new building to host our two schools, but I firmly believe building these schools is not an impossible task. With God leading us, we can all work together to provide the best education possible for our children. Let's dream big, for we know that everything is possible with God!

Sincerely

Emily Hernandez
Principal
St. Mary of the Woods School/Trinity High School



Together...We Can!

Introduction:

According to the history of our parish, St. Mary began its ministry of Catholic School education in 1879. Under the leadership of the Sisters of Charity of Nazareth, KY followed by the Ursuline Sisters of Mount Saint Joseph, Maple Mount, KY and now the lay faithful, the parish will celebrate, in 2029, 150 years of Catholic School education on its present campus. For nearly 150 years, our Catholic Schools have produced men and women, outstanding in holiness, living witnesses of God's unchanging love.

With six years of steady growth, aging buildings, and having reached capacity, parish leaders began conversations regarding the possibility of a new school housing both St. Mary of the Woods School and Trinity High School. Receiving strong support both from parish leadership and parishioners in a parish wide feasibility study, we requested and received diocesan approval to move forward with a Capital Campaign to build a new school.

With nearly 150 years of Catholic School ministry at St. Mary, it is our turn to build upon the sacrifices, hopes, and dreams of generations gone before us who believed in the importance of education in the ways of faith. Christ is the reason for our schools and its through the ministry of Catholic School education, with current and future families, that we seek to form disciples for Jesus Christ and His Church. This is our parish's mission.

Our Challenges:

With all the remarkable accomplishments of our Catholic Schools, six years of steady growth, capacity enrollment, potential students being turned away for lack of space, we are confronted with the great challenge of what to do moving forward? Since Catholic School education is a high priority in our parish, we must keep our schools strong, make sacrifices to keep our educational facilities robust and safe, and remain committed to our mission of forming the faith of our children, educationally and spiritually.

Here are a Few of the Challenges We Face:

- Our school buildings are aging, even as maintenance costs continue to rise.
- Structural issues currently exist in both school buildings. Fixing these will be very costly.



- We have limited meeting space for school and small group gatherings. For example...
 - St. Mary of the Woods School is currently utilizing two of Trinity's classrooms. But, with its own growth, Trinity High will need to reclaim, sometime soon, the space lost to St. Mary which is growing also.
 - Further, to avoid turning away potential students, we are adding a learning cottage with additional classroom space. But this could only ever be a temporary fix.
- State regulations allow up to 31 students per class for grades 7th – 11th and only 24 students per class in grades K – 4th. To maintain a positive teacher/student ratio, we desire to keep our classroom size smaller than the state requirements dictate. This helps keep our student to teacher ratio much healthier and more productive for our students.
- Daviess County is growing and the growth is largely in our direction. This means, rather than declining, our enrollment is likely to continue to rise in the coming years. We should prepare for this growth. Daviess County, for example, has grown nearly 10% in population just in the last ten to twelve years.
- And, speaking of growth, our parish membership added 250 families in just the last 6 years. With the growth in the county, our parish will likely continue to grow, too. To remain faithful to our mission as a parish, wouldn't Christ want us to make plans to prepare a place for those who will be seeking a place of worship for their family and a Catholic education for their children?

Faced with these and other challenges, parish leaders requested and received permission from the Parish Council, the Finance Committee, as well as the Diocese of Owensboro to explore all possible options to address the many challenges described above and, ultimately, answer the question:

**Can we expand and grow our current schools?
Or is rebuilding our schools the better option?**

- A Steering Committee has been appointed. Those serving are: Fr. Brian Roby, Ryan Aud, Selena Aud, Whitney Bickett, Nick Fulkerson, Chuck Hardesty, Emily Hernandez, Terra Knight, Anna McDaniel, Barry Midkiff, Jessica Morris, and David Nash. The architectural firm, Axiom, was engaged, along with other professional contractors.
- Many hours and multiple meetings have taken place, as the Steering Committee has carefully reviewed options.
- A congregational feasibility study was conducted as well and revealed widespread support for parish, our parish schools, and our mission of sharing the Gospel and providing the highest quality education in a Catholic environment.



Building the future.

Following countless meeting hours, much prayer, and an active consideration of all our options, it has become crystal clear that building a new school to house both St. Mary of the Woods School and Trinity High School is in the parish's best interest going forward. It is estimated that the new school will cost \$12M.

Our Plan:

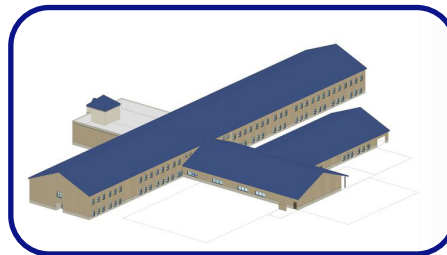
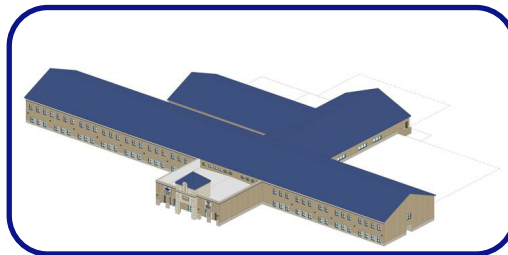
Here are a few of the architectural renderings of the proposed new schools



Here is what the front façade of the school could look like.



Here is an overview of where the school would be located.



Here are a few overview photos of what the school could look like.

The plan is subdivided into 2 Phases:

Phase One: The school will be built, housing both St. Mary of the Woods School and Trinity High School estimated at \$12M.

Phase Two: Auditorium and secondary gymnasium will be built and is estimated to cost approximately \$2M. This phase will come later. Our focus is on raising the financial resources to build the new school (Phase One).

Our recent feasibility study indicated that, in addition to the gracious gift/pledge of \$5M from a devoted benefactor, the parish has the potential of raising another \$2M to \$3M or

more over a 5-year payout period. So, when all is said and done, we hope to have pledges and gifts of \$8M to \$9M for Phase One.

Together...We Can:

In just a little more than six years, we will celebrate the 150th anniversary of Catholic education on our church campus. This is our moment...our opportunity to make an eternal difference in the lives of children, youth, and adults. I invite you to join me in capturing this graced moment as we build on the hopes and dreams of previous generations. They sacrificed much to give our children – and many of you who are now adults – the opportunity of forming your faith and preparing you educationally for the future you enjoy today.

Now, it's our turn.

Will this be easy? No. Rewarding? Yes. Enduring? You better believe it.

There are few things we could ever do as a parish that would have a more eternal impact on the Kingdom of God than for each of us to make similar sacrifices today, giving our children, as well as the children, youth, and families of our future, a new school within which to grow and develop into productive and faithful Catholic citizens.

As pastor, I am asking you to join me in prayerfully considering what you and your family would give over the next 5-years to the capital campaign. Remember, your gift or pledge should be “over-and-above” your regular offertory giving. For example, let’s say a family in our parish is giving \$3,000 annually to the regular church offertory but they have decided to give \$10,000 additionally but over-and-above their offertory giving and spread out monthly over 5-years. This means, in addition to giving \$250 dollars monthly to the offertory, they would be making another gift monthly of \$167 dollars over 5-years to fulfill their \$10,000 pledge.

- Pray about your gift. Ask the Holy Spirit to guide you in the pledge you make.
- Pledge/Commitment Weekend at all Masses will be November 5/6, 2022.

Join with me by resolving to participate by making a pledge on or before November 5/6 this year.

Together. We Can!

Fr. Brian Roby, Pastor



Together...We Can!

FAQs:

1. Many of us are not sure “if this is the right plan” going forward. The idea of building a new school is compelling enough. But the cost of building a new school gives pause to many of us. Can we afford to do this? It feels as if what is needed is beyond our financial reach. Maybe we should do this in stages or phases, starting first with the building of a new St. Mary and then Trinity High later.

Response: The total final cost of the project has not been determined yet. After plans are finalized and contractor’s bids have been received, we will assess the cost of the project and determine if/how the construction phases will be completed based on Capital Campaign pledges. The diocese requires that a minimum of 60% of the project cost is pledged and at least 40% of the funds collected prior to beginning construction. An estimate and building plan has been obtained for a school facility that meets all of our current needs, anticipates an increase in enrollment, and complies with all state regulations. Having this plan is important to give us an idea of what we could do and what the cost could be. Undertaking the feasibility study then helps determine the extent of our financial ability, so that we have a better understanding of what is within our financial reach. It also helps us plan for a capital campaign in which we are able to obtain more definite figures and make decisions.

2. Does the potential cost to build a new school (\$12M) include furnishings, desk, computers, and equipment or will those items need to be funded in some other fashion? What existing items, such as desks, will just be moved to the new building once it’s constructed?

Response: We are going to utilize all existing equipment that we can as we have kept interior furnishings updated. The \$12 million figure will cover the building only and items inside that are attached (fixtures) such as, water fountains, toilets, sinks, lighting, etc. This will not cover office and classroom furnishings but once again, we will utilize all we can if it is still in good shape. We are in the process of obtaining an estimate for the cost to purchase all new furnishings. This estimate has been requested from the same company who created the building plan, as that company has knowledge of average costs associated with recently constructed school buildings in this area.

3. What will be the cost associated with maintaining new buildings and facilities? Daily costs? Staff costs? Supplies? Has someone projected the costs associated with maintaining a growing school? And what will happen to the blue gym? Will it be kept and re-purposed or torn down?

Response: In time, since the new school will include an auxiliary gym, the old gym will need to come down. The old gym, like all old buildings, needs much maintenance yearly. The floor is buckling, the lighting is insufficient, the lack of air conditioning



makes the building unusable based on current KHSAA laws for several months out of the year. Originally, the old gym was scheduled to come down when the Horn Center was built. However, it was determined that as long as it was financially feasible to do so, having an extra playing court was a benefit to the schools. Again, if an auxiliary gym can be included in the new school construction, it will cover the need for the additional playing court that can be utilized year round with less overall maintenance.

As far as the daily costs of the new school, in general, new facilities are more cost effective, particularly due to the way things are built now, as opposed to an older building. For example, there is no comparison with regard to the maintenance cost of the Horn Center as compared with the maintenance of our schools. Older buildings require more maintenance.

We assess every year how many teachers are needed to educate the number of children who want a Catholic education. The costs needed to maintain our school is assessed each year as well. The school budgets for all needs including supplies. That process will stay the same with the new school building and anticipated increase in enrollment.

4. Will tuition have to go up to help pay for the new school facilities? And, for those of us who are parents of students in one of our schools, will we be expected to make tuition payments, support the parish offertory, and make a pledge on top of this to help build the school?

Response: In the past six years, tuition hasn't covered either school's operating expenses. Many private schools do not do any fundraising and they do charge what it truly costs to educate a child in the school. If we were to charge what it truly costs, tuition would be over \$9,000 for each student. We at St. Mary and Trinity do a preliminary budget each year and increase annually. We do fundraise to offset what it truly costs and plan to continue to fundraise as we have over the years. The parish also gives a subsidy to Trinity High School and covers half of the operating budget at St. Mary of the Woods School each and every year. The capital campaign for the new school is a separate account than the parish and school accounts. The campaign is beyond these accounts and is by invitation. If families are capable of giving above and beyond offertory and tuition, it will be appreciated but not required.

5. Are we sure we have exhausted every possible scenario for expanding and renovating current school facilities to accommodate growth and expansion of both St. Mary and Trinity? Have structural engineers, for example, said it would be more costly to keep and renovate existing facilities and add additional rooms than to rebuild all new facilities for the school?

Response: We are in the process of working with structural engineers from Axiom Engineering to determine what, if anything, could be done in terms of possibly adding on to the existing structures. We have had preliminary discussions with our local planning and zoning and building codes office concerning the possibility as well. Preliminary findings show that there are several barriers to expanding current school



facilities, including: lack of space on the existing site to accommodate changes in required egress/ingress that come with adding onto the buildings; potential asbestos remediation issues; building code issues that arise due to the original structure being built long before existing building codes. We have learned, for example, that even if the buildings were built with the intention of possibly adding another level at the time of construction, building codes and engineering standards have changed so much over the last 60 years that it may not be an option under current standards. We will, however, continue to explore these options as part of this process, particularly as finances dictate.

6. Why would we not rebuild the school on the church side of our property and create more parking across the street where the new school will be built? Or why not remove the Rectory and utilize that space and existing space where the school is now and rebuild an entire school? That way, the school is on the same side of the street with our other buildings. We can surely find or build a new rectory somewhere close.

Response: The current Rectory was built in 2003, and is one of the newer buildings on campus. There would be several issues with trying to build where the current school facilities are located now. First, there would be nowhere for children to attend school if current buildings were demolished and reconstruction started in the same place. All of that work could not be completed within the summer months while students are out of school. Second, based on preliminary research, it does not appear that there is sufficient space on the grounds on the same side of the street (Franklin Street) to construct a new school building to meet all the code and other requirements and needs, just as it does not appear there is sufficient space to add on to the existing facilities for the same reasons.

7. If we build a school across the street, doesn't that raise safety issues when the children will need to cross the street for daily Mass? We thought the reason for building the Horn Community Center on the school and church side of the street was to keep our school children from having to cross the street. Besides the safety concerns, doesn't building across the street mean our students will have farther to walk to Mass and this at times when there is inclement weather?

Response: The Horn Community Center was built where it is because there was not enough land on the other side of the street (Franklin Street) at the time. We did not acquire a huge portion of that land across from the school on the other side of Franklin Street until the last few years. We hope to build an auditorium/auxiliary gym so the only time students will be crossing the street will be to attend Mass. In addition, the new school would have its own off-street access for pickup and drop off of students, which will eliminate students crossing the street during those times. Also, the new school needs to be built on the other side of the street so we can continue to educate students during the building process.

8. Even if we raise \$8M or more in a capital campaign, that is still short of the needed \$12M. How will we raise the additional funds? Will the building project have to phased? If so, what will be included in each phase going forward? Further, why



would we not build the new school in our current parking lot, then tear down the existing school and turn that space into parking?

Response: The proposed site for the new school allows adequate land area for the building, playground and potential expansion needs. This site will offer limited disruption to our students and parishioners during construction. It will offer ample parking at the school and open up additional needed parking for parish functions. The distance from church will be addressed by planned space for an auditorium/auxiliary gym suitable for Masses and other services during inclement weather. The capital campaign will provide us with financial parameters for the project. One possible option is an extended capital campaign (5 years instead of 3 years). In addition, if the capital campaign falls short of the determined cost of the project within the pledge period, a renewal of pledge commitments would be sought for an additional period, to be determined, as was the case with the Horn Community Center.

9. As a means of controlling future tuition costs, have we considered establishing a “Tuition-Assistance Endowment Fund” that parishioners and families of school students might contribute to in the coming years? In time, wouldn’t this endowment grow large enough to generate yearly income which could then be applied to tuition cost increases, thereby holding the actual tuition costs from having to be increased?

Response: Trinity High School has had an established endowment fund for several years. As the Parish was made aware, the fund reached \$1 million in 2022! After ten years in the making, in 2018, an endowment fund was established and funded for the benefit and perpetuation of St. Mary of the Woods School. Both endowment funds are managed by the same financial adviser with Baird (formerly Hilliard Lyons). You will see the balance of the endowment funds for both schools every week in your weekly bulletin, as it is listed along with other financial matters of the Parish. In general, only a portion of the income earned by the funds each year can be used to perpetuate, support and uphold the education and activities of the schools. While these endowment funds are not planned for or set aside for tuition assistance, there is an established fund that provides tuition assistance each and every year for families that need it. Our Tuition Assistance dollars are made available to those in need through the gracious contributions of our parishioners and donors. We use a third party outside agency, FACTS, to process our applications due to KHSAA standards and to add a layer of financial privacy for families. Not only does FACTS process the application, it assesses the information, and school officials receive a report after they calculate how much tuition assistance a person needs. We know how much is in our restricted tuition assistance fund each year and we have been able to give out 100% of assessed need for many years. Tuition assistance funds are needed every year and utilized every year. The endowment funds continue to reinvest income each year so that future needs of the schools may be met. Meeting the needs of the schools in that way, through the current endowment funds, also help offset the need for tuition increases by providing funds that help cover certain costs and expenses. Please keep in mind, the tuition assistance fund is for those who have a financial need for tuition assistance. It is not meant to simply provide free tuition for all students, regardless of financial need.



Together...We Can!

Methods of Giving

Selecting the best gift plan depends on one's personal financial situation and goals. As tax laws are always changing and each individual's situation is unique, donors are encouraged to consult with financial advisors to determine which method of contributing is most beneficial.

There are many avenues of giving so that you are able to meet your needs and have the opportunity to support St. Mary of the Woods School and Trinity High School in a meaningful way. Pledges are commitments made in good faith, but are not legally binding. You may want to consider stretching pledges over a five-year period to maximize the total amount of your support. This commitment can be fulfilled through weekly, monthly, quarterly, semiannual or annual installments.

We encourage all donors to consider a 10 to 20 percent initial payment to begin your commitment.

Gifts of Prayer and Consideration

No one can discount the value of prayer and everyone is equal in prayer. May we all pray for our church leaders, so that they will make the right decisions in our spiritual guidance and in the growth of St. Mary of the Woods School and Trinity High School.

Gifts made by cash or check are the most common. Checks should be made payable to Together We Can! Campaign. In addition to gifts made by cash or check, we will gratefully accept gifts in various forms, including those described:

Gifts of Securities – Stocks, Bonds and Mutual Funds

Charitable gifts of stocks, bonds or mutual funds, which have been held for at least one year and have appreciated, offer special tax advantages. You will receive a tax deduction for the full market value of the gift but you will not have to pay capital gains tax on the appreciated amount. If you sell depreciated stock and contribute the proceeds, you will receive both a tax deduction for the charitable gift and a deduction for the capital loss.

Gifts in Kind

Tangible personal property can be given to support St. Mary of the Woods School and Trinity High School. These gifts may be eligible for a deduction of the item's fair market value, if the gift is related to the "charitable purpose" of St. Mary of the Woods.

Corporate Matching Gifts

A matching gift program provided through your employer or board membership may allow you to increase the value of your gift. Many companies match charitable gifts made by their employees, retirees or board members.

Donate a Retirement Plan

Naming St. Mary of the Woods as a primary or contingent beneficiary of a retirement plan (e.g., 401(k), IRA) can benefit both the parish and your estate. Your retirement account's plan administrator can help you designate St. Mary of the Woods as a beneficiary.

Note: This information is not intended as legal or tax advice. You are advised to consult your own qualified professional advisor for specific recommendations.



Gift Profile

<u>Total 5-Year Gift</u>	<u>Weekly Amount</u>	<u>Monthly Amount</u>	<u>Quarterly Amount</u>	<u>Semi- Annual Amount</u>	<u>Annual Amount</u>
\$300,000	\$1,153.85	\$5,000	\$15,000	\$30,000	\$60,000
\$240,000	\$923.08	\$4,000	\$12,000	\$24,000	\$48,000
\$180,000	\$692.31	\$3,000	\$9,000	\$18,000	\$36,000
\$120,000	\$461.54	\$2,000	\$6,000	\$12,000	\$24,000
\$90,000	\$346.15	\$1,500	\$4,500	\$9,000	\$18,000
\$60,000	\$230.77	\$1,000	\$3,000	\$6,000	\$12,000
\$48,000	\$184.62	\$800	\$2,400	\$4,800	\$9,600
\$42,000	\$161.54	\$700	\$2,100	\$4,200	\$8,400
\$36,000	\$138.46	\$600	\$1,800	\$3,600	\$7,200
\$30,000	\$115.38	\$500	\$1,500	\$3,000	\$6,000
\$24,000	\$92.31	\$400	\$1,200	\$2,400	\$4,800
\$18,000	\$69.23	\$300	\$900	\$1,800	\$3,600
\$12,000	\$46.15	\$200	\$600	\$1,200	\$2,400
\$9,000	\$34.62	\$150	\$450	\$900	\$1,800
\$6,000	\$23.08	\$100	\$300	\$600	\$1,200
\$4,500	\$17.31	\$75	\$225	\$450	\$900
\$3,000	\$11.54	\$50	\$150	\$300	\$600
\$1,500	\$5.77	\$25	\$75	\$150	\$300

“Not Equal Gifts but Equal Sacrifice”

5-Year Capital Campaign

You are Encouraged to Make Your Gift Over-and-Above Regular Offertory Giving

There are a variety of ways to fulfill the gift amount you feel God may be directing you to give. For example, you may give the full amount of your pledge all at once. Or you may pay toward its fulfillment weekly, bi-weekly, monthly, or annually. The chart above will help you see what a monthly gift amount will total over a 5-year period. For example, 60 monthly gifts of \$150 becomes a \$9,000 investment in the building of our Catholic School. To determine what God wants you and your family to give to the capital campaign, we encourage you to pray. The Holy Spirit will inspire you and guide you toward God's will. To be successful, we need the generous giving of many and the extraordinary giving of a few.



Building the future.



ST. MARY OF THE WOODS CATHOLIC CHURCH